

Postal Address for Cheques and Registrations

History Conference
Anglican General Synod Office
PO Box 87-188
Meadowbank
Auckland 1742
New Zealand

For emailing registrations when paying by Direct
Credit please enter "History Conference" into the
subject line and send to:

gensec@ang.org.nz

The conference is being organised by the 2014
Bicentenary History Group, working under the
auspices of the 2014 Bicentenary Planning Group with
assistance from the Anglican Church and links to the
Religious History Association of Aotearoa New
Zealand.

Conference Organising Committee

Revd Dr Allan Davidson (Convenor), Samuel
Carpenter, Revd Earle Howe, Revd Dr Rangi
Nicholson, Rev Dr Stuart Lange, Associate Professor
Peter Lineham, Revd Dr Peter Wensor, Dr Adrienne
Puckey.

Reference Group

Revd Dr Laurie Guy, Associate Professor Manuka
Henare, Revd Christopher Honoré, Professor Jonathan
Mane-Wheoki, Rt Revd Kitohi Pikaahu, Associate
Professor John Stenhouse, Te Aroha Rountree, Dr Nick
Thompson.

Conference Opening

A Pōwhiri will commence at Te Whare Rūnanga, the
Waitangi Treaty Grounds, at 4pm on Tuesday 27
November. This will be followed by a conference
dinner at the Copthorne Hotel at 6pm and the opening
addresses in Treaty Room 1 at the Copthorne at
7.30pm. (Please note the change of venue for the
Pōwhiri.) For directions see:

<http://www.waitangi.net.nz/find-us.htm>

The Conference will finish at 5pm on 29 November.

Further information

For further details about the conference contact Allan
Davidson: ak.davidson@auckland.ac.nz or Earle Howe
earlehowe@orcon.net.nz

Website details: www.gospel2014.org

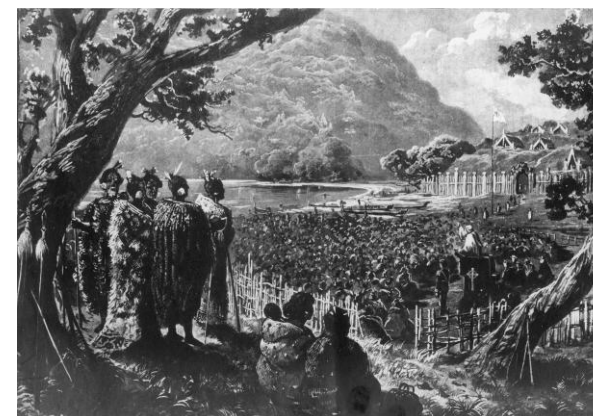
IWI – CHRISTIANITY - TAUIWI

**Hei Kohikohinga Kōrero
mō te Hāhi Karaitiana ki Aotearoa**

**Re-evaluating Christianity's Influence
in Shaping Aotearoa New Zealand
c.1800 to c.1860**

Conference

27-29 November 2012



Kennett Watkins' depiction of Marsden preaching Christmas Day 1814, JKTL

**Pōwhiri – Welcome:
Te Whare Rūnanga
Waitangi Treaty Grounds, Waitangi
27 November 2012, 4.00pm**

**Opening Addresses & Plenary sessions:
Copthorne Hotel
Waitangi, Bay of Islands
27-29 November 2012**

Tēnā koutou katoa

December 2014 marks the bicentenary of the Revd Samuel Marsden's arrival, along with the first Church Missionary Society families, at Oihi in the Bay of Islands. They were accompanied across the Tasman by Ruatara, Hongi Hika, Korokoro and five other kinsmen. Marsden's sermon on Christmas Day 1814 formally inaugurated the mission in New Zealand.



Marsden Cross, Oihi

The contact between Te Pahi and Marsden in 1805, the relationship established between Ruatara and Marsden from 1807, and the visit of Thomas Kendall and William Hall to New Zealand in June and July 1814 provide part of the back story to these developments.

Other noteworthy missionary beginnings followed. They included the commencement of the work of the Wesleyan Methodist Missionary Society in 1822 and the arrival of Bishop Pompallier and Catholic missionaries from the Society of Mary in 1838.

From the very first contact Christianity was being evaluated and tested by local leaders and their iwi. After 1830 Christianity was experimented with and incorporated in various ways within tribal and village life. The agency of indigenous evangelists was a significant part of this process.

The arrival from the 1840s of increasing numbers of European migrants saw the beginnings of settler churches in a variety of denominational forms. This resulted in tensions between the missionary and colonial expressions of Christianity.

Considerable historical debates have taken place over the early missionary beginnings and their implications. The aim of the Conference is to re-evaluate these developments and the formative

Christian influences in the shaping of New Zealand society.

In holding the conference in Te Pē-o-whairangi, the Bay of Islands, the organisers are conscious of the significant early engagement there of tangata whenua with missionary Christianity. In other parts of the country local dynamics also contributed to different ways in which the missionary message was received. The conference will provide an opportunity for dialogue about these issues.

It is planned to publish the papers as a contribution to the 2014 bicentenary. Any profits from the conference will be available to help subsidise their publication.

Conference Programme: This will be posted on the following website in August www.gospel2014.org

Tour of early mission sites: A one-day tour after the conference will be arranged if there is sufficient interest. If you would like to be part of a tour (costs to be advised) please contact Earle Howe by 31 August 2012 earlehowe@orcon.net.nz

Accommodation:

Copthorne Hotel (special Conference rates are available at the Copthorne. A booking form is available with details at www.gospel2014.org Alternatively let the Copthorne know you are attending the history conference when making your booking): www.millenniumhotels.co.nz/copthornebayofislands/index.html

For accommodation in the Paihia area:

- www.booking.com/Paihia
- http://www.aatravel.co.nz/newzealand/Paihia_Accommodation.html
- <http://www.bay-of-islands.co.nz/accommod.htm>

REGISTRATION

This form is also available on the following website: www.gospel2014.org

Registrations must be received by **1 October 2012**
Late Fee \$50.00

Full Conference Costs:

(includes evening meal 27 November, morning and afternoon tea and lunches 28-29 November)

- Full Conference: \$200.00
- Full Conference - unwaged/student: \$170.00
- Receipt required (available at the Conference)

Daily Conference Costs:

\$80 per day waged \$70 per day for unwaged/students
28 November waged unwaged/student
29 November waged unwaged/student

Method of Payment

- Cheques: payable to "Anglican Church of NZ"
- Direct Credit

Account Number: 02-0192-0130001-004

Particulars: HISTORY "SURNAME"

Reference: A7/9405 CONF

- Overseas registrations – contact earlehowe@orcon.net.nz

Name:.....

Address:.....

.....

.....

Name Badge Preference.....

Email:.....

Telephone:.....

Iwi – Christianity – Tauwi Conference
Speakers and Topics

Rt Revd Te Kitohi Pikaahu

Te Hari a Ngapuhi – The Joy of Ngapuhi

Rt Revd Muru Walters

Waitangi – Reflecting Waters

Revd Dr Allan Davidson

Protestant Missionary Beginnings in New Zealand in a Global Context

Dr Adrienne Puckey

The CMS-LMS connections, 1795-1835

Dr Peter Bolt

The *Boyd* incident and the delay in the New Zealand mission

Revd David Pettett

Marsden's Sermon – Christmas Day 1814 – What did he say?

Associate Professor Manuka Henare

Hongi Hika and his encounter with the Gospel, 1800 -1827

Revd Chris Honoré

John Gare Butler and Maori – Mission relationships, 1820-1823

Professor Malcolm Prentis

A thirst for useful knowledge: Samuel Marsden's Maori Seminary at Parramatta, 1815-1827

Revd Malcolm Falloon

Christian Rangi: A Brand Plucked from the Burning?

Judith Ward

Papahurihia: A Syncretistic Religion or a Seasonal Rite?

Dr Hazel Petrie - Body or Soul?

Redeeming Māori war captives

Dr Angela Middleton and Associate Professor Ian Smith

Archaeology and daily life at Hohi (Oihi Mission) Bay of Islands

Vivien Caughley

Women's Marks: the King Family Samplers 1814-1855

Dr Bryan Gilling & Catherine Porter

Te Wiremu and Te Tiriti: Henry Williams and New Zealand's Formative Documents

Dr Grant Phillipson

Redeeming the Redeemers?: The use of Missionaries to Prove Treaty Claims

Revd Hirini Kaa

The Gospel according to Ngāti Porou: deconstructing the Māori-Missionary Myth

Dr Moeawa Callaghan

The Wairoa District Mission – Tangata whenua and James Hamlin

Revd Wayne Te Kaawa

“Do not turn a deaf ear to the cry of these Islands”: John Macfarlane and Māori, 1840-1844

Professor David Williams

“The Maoris were pleased with that proposition because the word came from the Bishop” (background to the proposed Trinity College at Porirua and *Parata v Bishop of Wellington* (1877))

Dr Geoff Troughton

Missionaries and the peace tradition in New Zealand

Associate Professor John Stenhouse

Te Harawira, humanitarian Christianity and New Zealand racial politics, 1839-1865

Revd Earle Howe

“Moral Influence” in Early Racial Interaction in New Zealand

Revd Ren Kempthorne

Te Waipounamu, the Island of Peace

For abstracts and details about the presenters go to www.gospel2014.org and look under Conference Information.